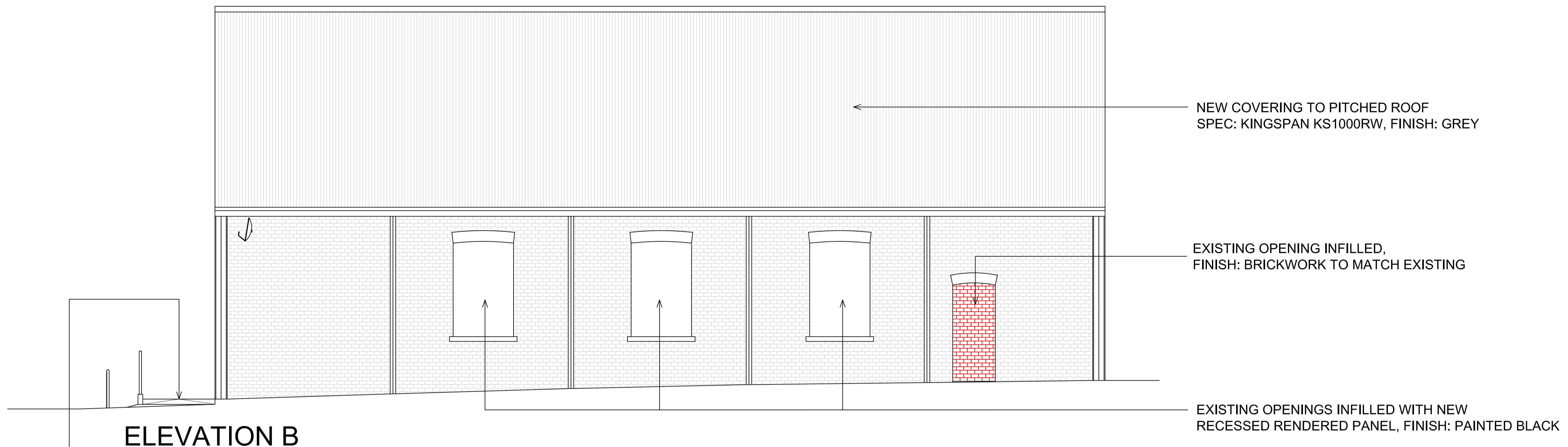


REVISION

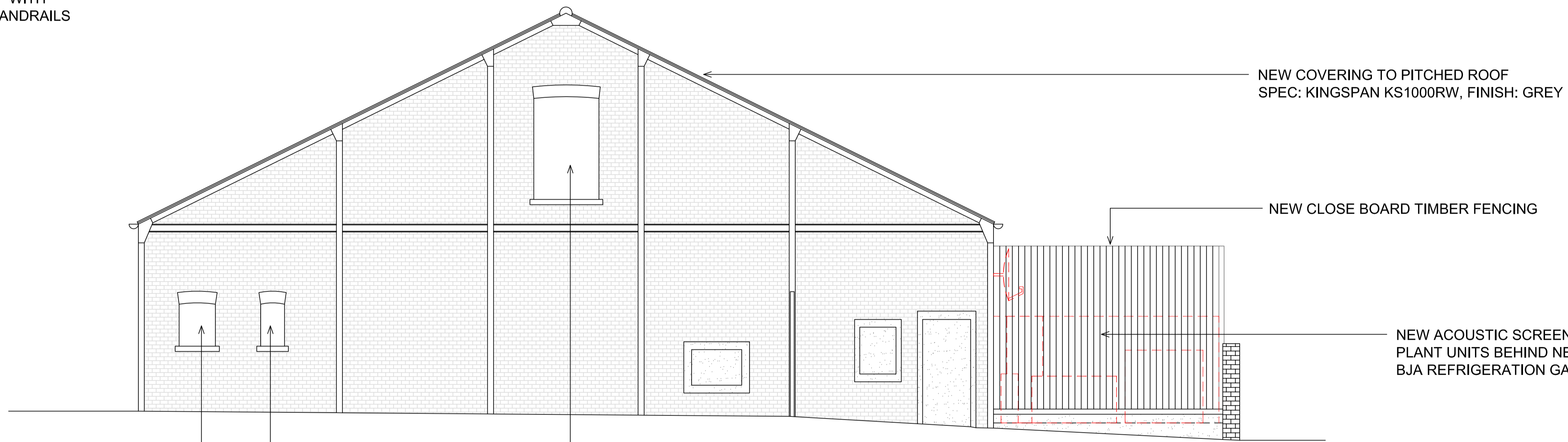
A. WINDOW OPENINGS AMENDED. NEW TALLER FENCE INDICATED. RECESSED PANEL SECTION ADDED.

13.10.13

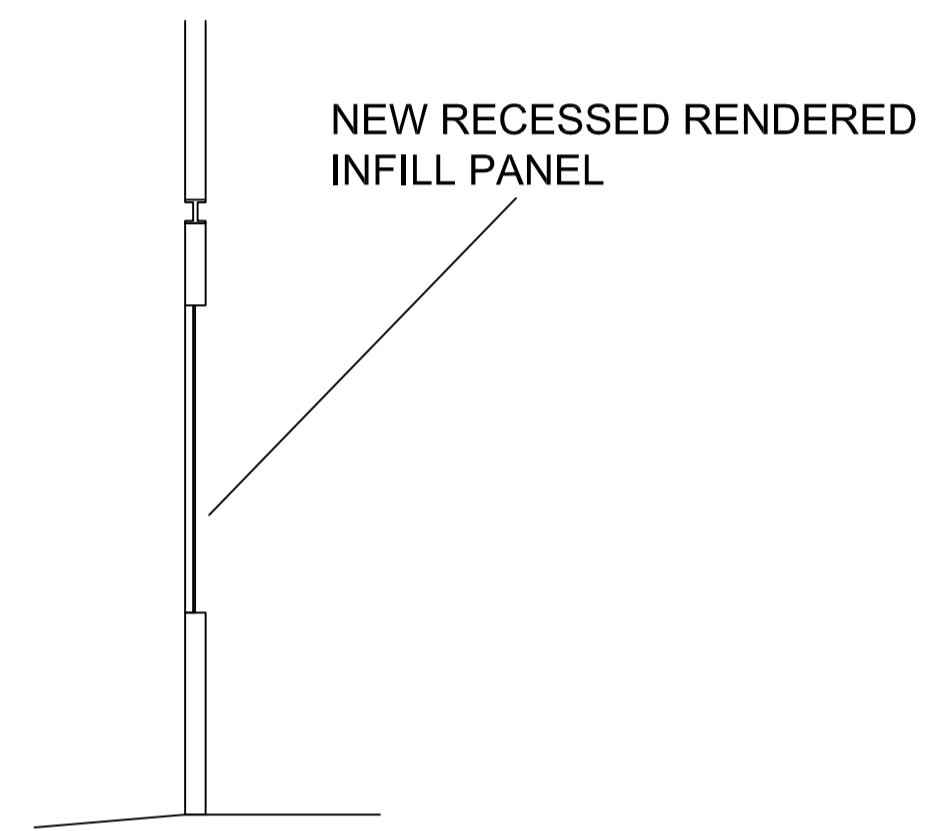


ELEVATION B

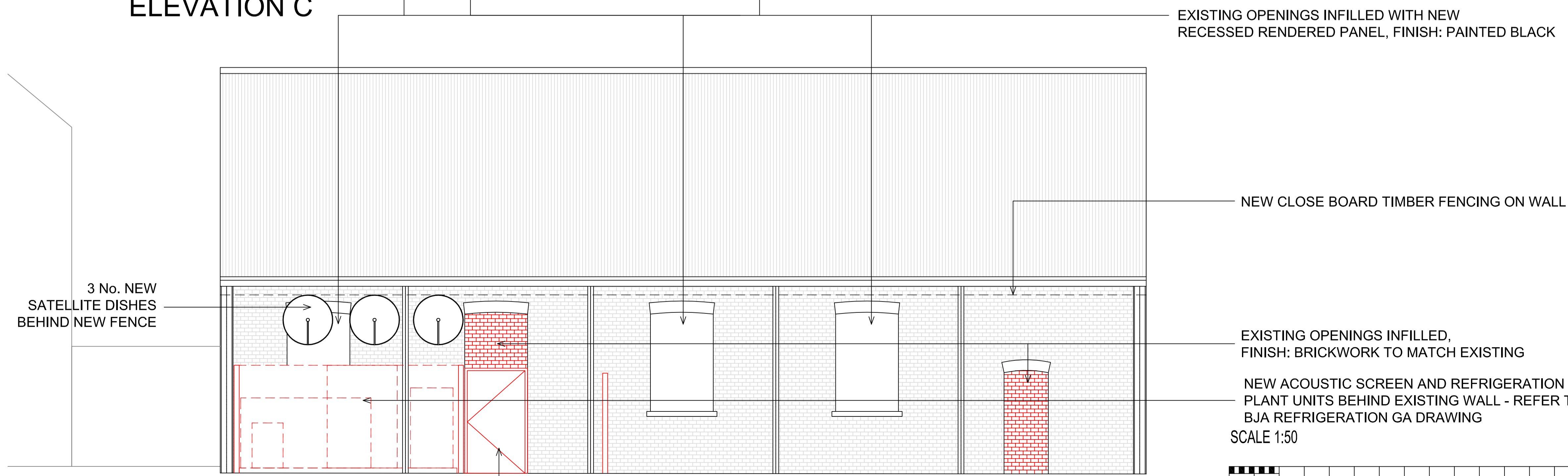
NEW NON SLIP RAMP WITH STAINLESS STEEL HANDRAILS



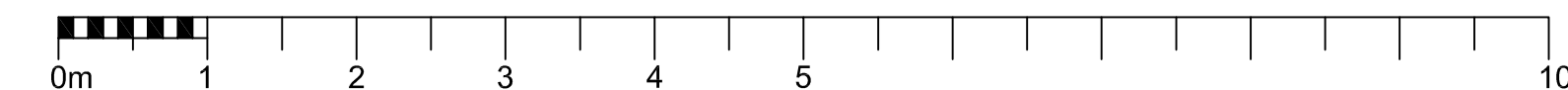
ELEVATION C



SECTION B - B



ELEVATION D



SCALE 1:50

AMENDED PLANS

13/1798/DCI

16/10/13

© THE CONTENTS OF THIS DRAWING REMAIN THE SOLE PROPERTY OF WELLSFIELD ASSOCIATES AND MUST NOT BE COPIED OR REPRODUCED WITHOUT PRIOR PERMISSION.

FULL SURVEY NOT CARRIED OUT. DRAWING PRODUCED USING INFORMATION SUPPLIED BY THE CLIENT

Wellsfield Associates

80 High Street,
Hadleigh,
Essex.
SS7 2PB
Tel: 01702 551123
Fax: 01702 558530
mail@wellsfieldassociates.co.uk

project

Proposed CO-OP Store
200 Kings Road,
Cardiff,
CF11 9DF

PROPOSED SIDE & REAR ELEVATIONS

date **July 2013**

drawn **DAR**

scale **1:50@A1**

drg no. **2205.05a**